

PROVINCIA DI PIACENZA
COMUNE DI CERIGNALE

PROGETTO
COMPLETAMENTO DEL CAMPEGGIO
"LE PIANE"

TAV. 6

BUNGALOWS
PIANTE - SEZIONI - PROSPETTI
PARTICOLARI

SCALA 1:50

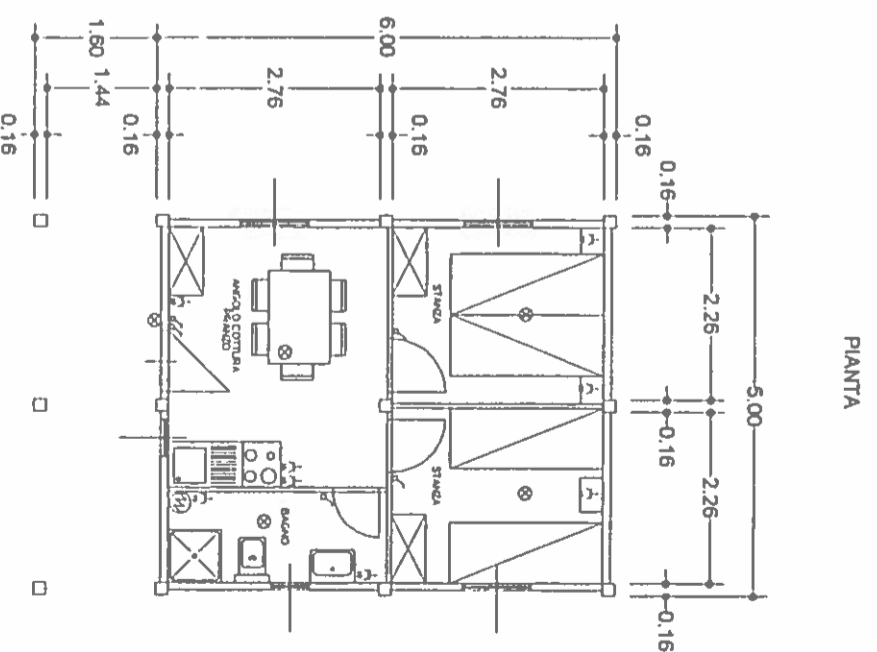
IL SINDACO

IL PROGETTISTA

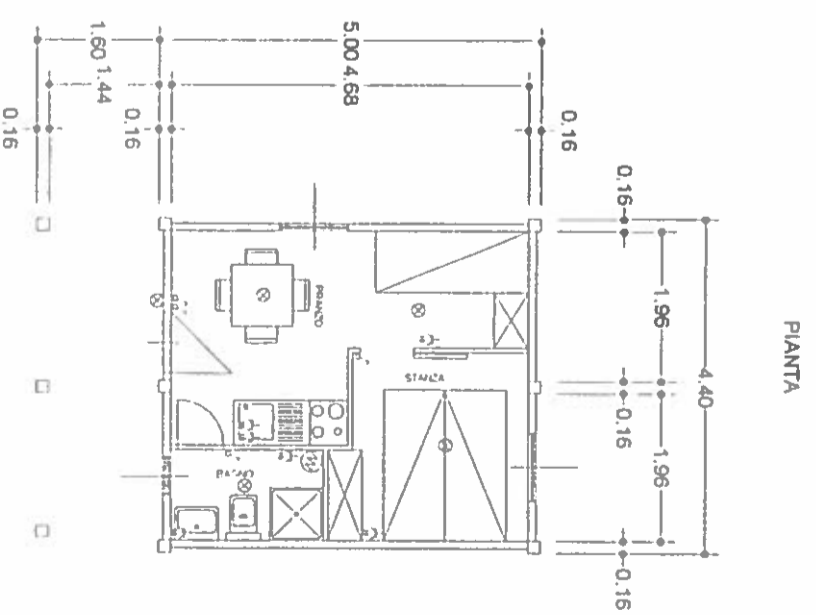
DATA: AGOSTO 1998.

DR. ING.
FABRIZIO FOLLINI
N. 192
DIPLOMA
DEGLI INGEGNERI
PROVINCIALE
DI PIACENZA

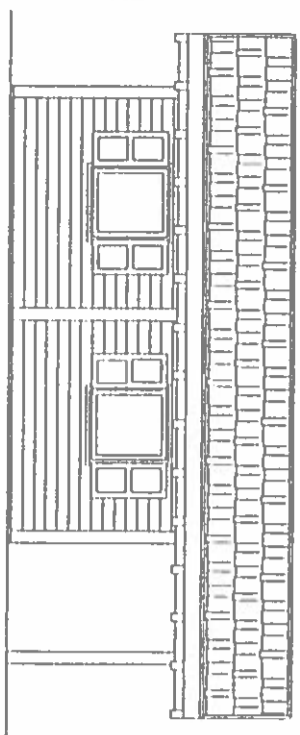
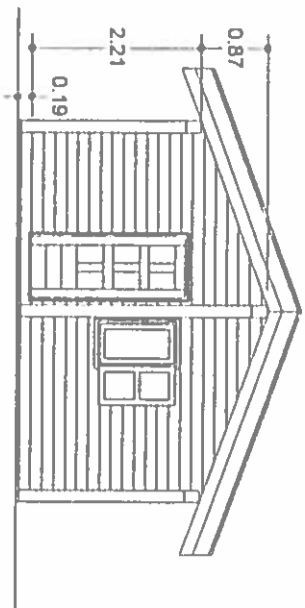
BUNGALOW TIPO 1



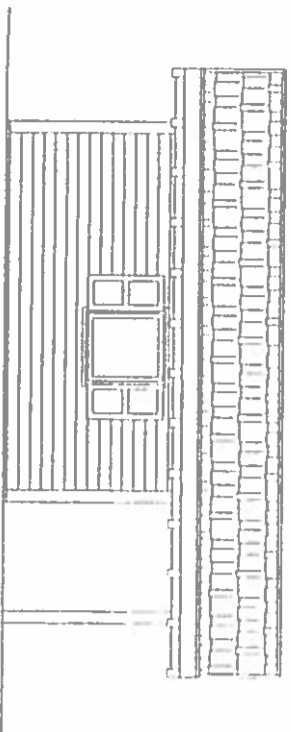
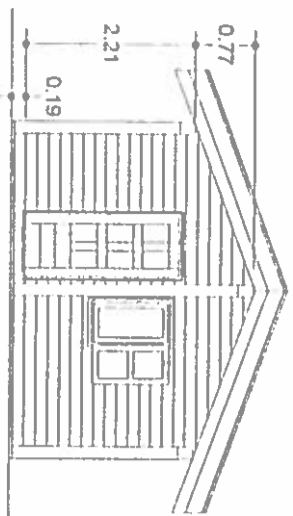
BUNGALOW TIPO 2



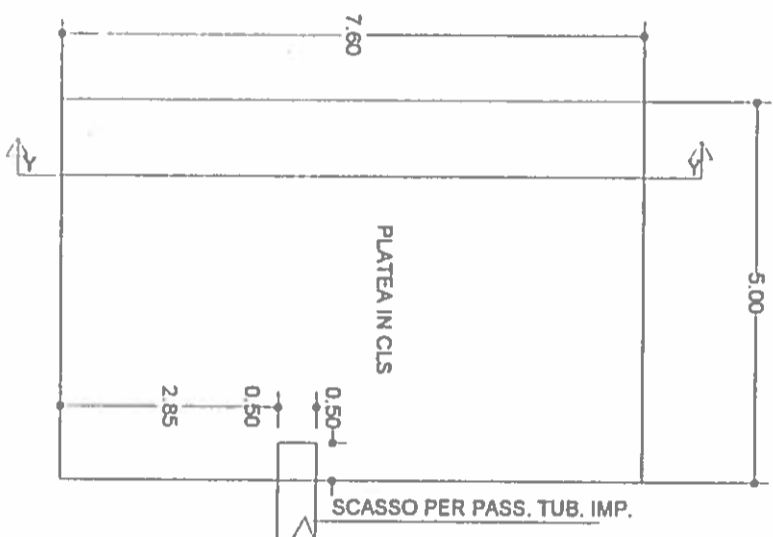
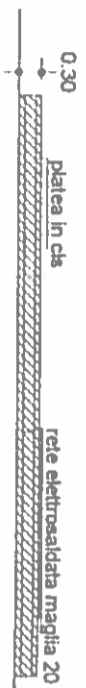
PROSPETTI



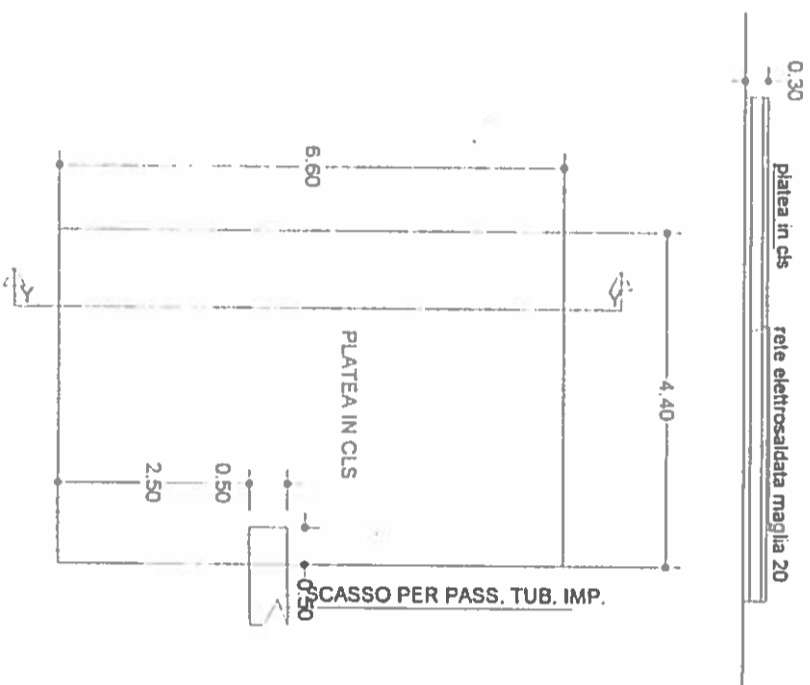
PROSPETTO



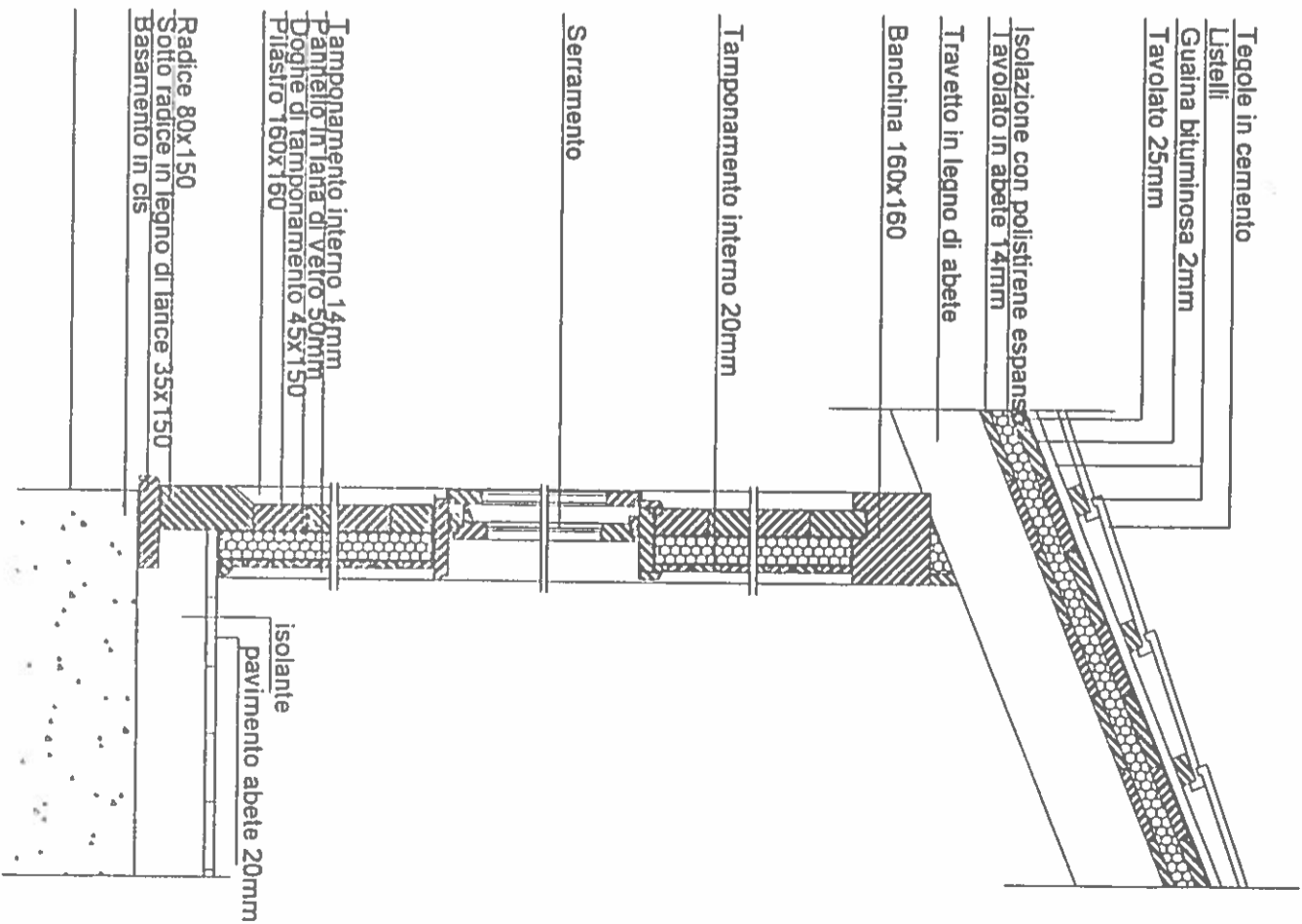
BASAMENTO
SEZIONE Y-Y



BASAMENTO
SEZIONE Y-Y



SEZIONE PREF. TO



Tegole in cemento

Listelli

Guaina bituminosa 2mm

Tavolato 25mm

Isolazione con polistirene espanso

Tavolato in abete 14mm

Travetto in legno di abete

Banchina 160x160

Tamponamento interno 20mm

Serramento

Tamponamento interno 14mm
Pannello in lana di vetro 50mm
Doghe di tamponamento 45x150
Plastro 160x160

Radice 80x150
Sotto radice in legno di lancia 35x150
Basamento in cls

isolante
pavimento abete 20mm